

M.V. "THOR INDEPENDENCE"



Owner :

Thoresen Shipping Singapore
Pte. Ltd.

Manager:

Thoresen & Co.,(Bangkok) Ltd.

Built : 25th October 2001

Tsuneishi Heavy Industries
(Cebu) Inc.

Classification : NK

Vessel's Type : Bulk Carrier,

Flush Deck without F'cle.

Flag : Singapore

Call Sign : 9V9088

Inmarsat C: 456473112

Fleet Broadband Phone:

+870 773 202565

Iridium Phone:

+8816 318 52498

E-mail :

thor.independence@hmcmail.com

Dimensions :

LOA 189.99 m.

LBP 182.00 m.

BREADTH 32.26 m.

Tonage :

GRT 30,303 MT

NRT 17,734 MT

DWT 52,407 MT

@Scantling draft 12.024 M

Hatch Dimensions

H1 20.40 x 18.40 m.

H2 21.25 x 18.40 m.

H3 21.25 x 18.40 m.

H4 21.25 x 18.40 m.

H5 21.25 x 18.40 m.

Tank top strength:

#1: 22 T/M², #2 : 17 T/M², #3 : 25 T/M²,

#4 : 17 T/M², #5: 22 T/M²

Hatch cover #1: 3.08 T/M², #2-5 : 1.75 T/M².

Deck 3.46 T/M²

Ventilation: Natural

Australia hold Ladder : Fitted

CO2: Fitted (E/R only)

Cargo Gears : Electro

Hydraulic 4 nos. x SWL 30 MT.

4 Grabs with 12 cbm each.

Machinery :

MITSUI-MAN B & W 6S 50MC

M.C.O. 10,600 p.s. x 116 R.P.M.

C.S.O. 9,010 p.s. x 110 R.P.M.

A/E : YANMAR 6N 18AL-HV ,
455 KW X 900 RPM, AC 450V ,
60Hz, 420Kw x 3 Nos.

DEADWEIGHT SCALE

DRAFT(M)	DWT
7.00	25,405
7.50	28,003
8.00	30,622
8.50	33,263
9.00	35,924
9.50	38,604
10.00	41,304
10.50	44,020
11.00	46,755
11.50	49,507
12.00	52,274
12.50	55,057

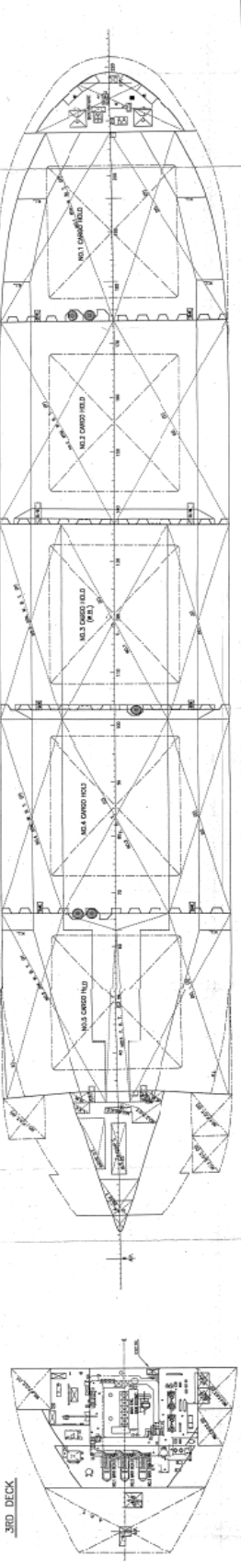
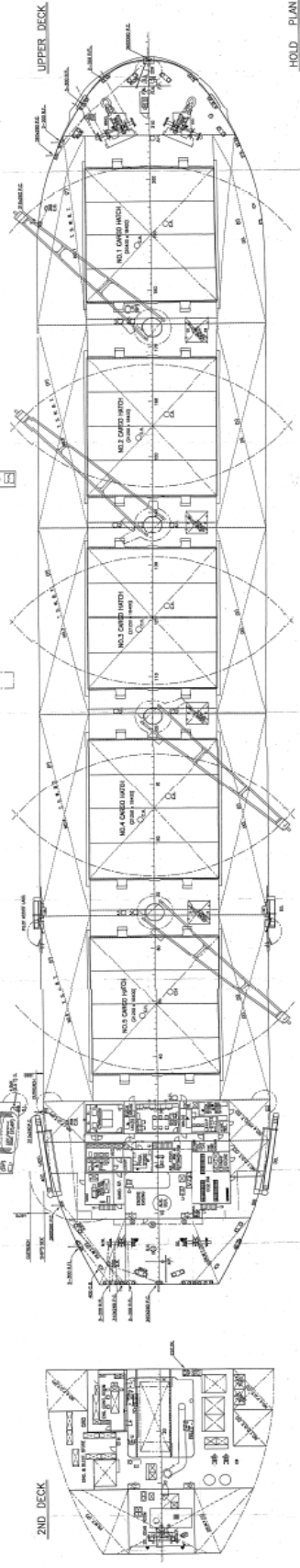
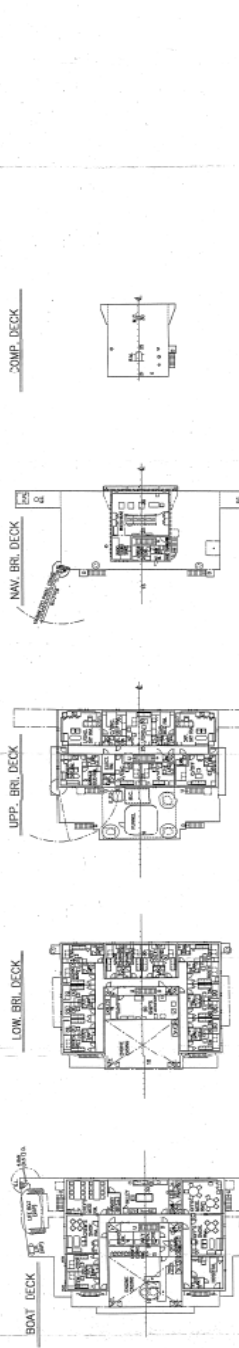
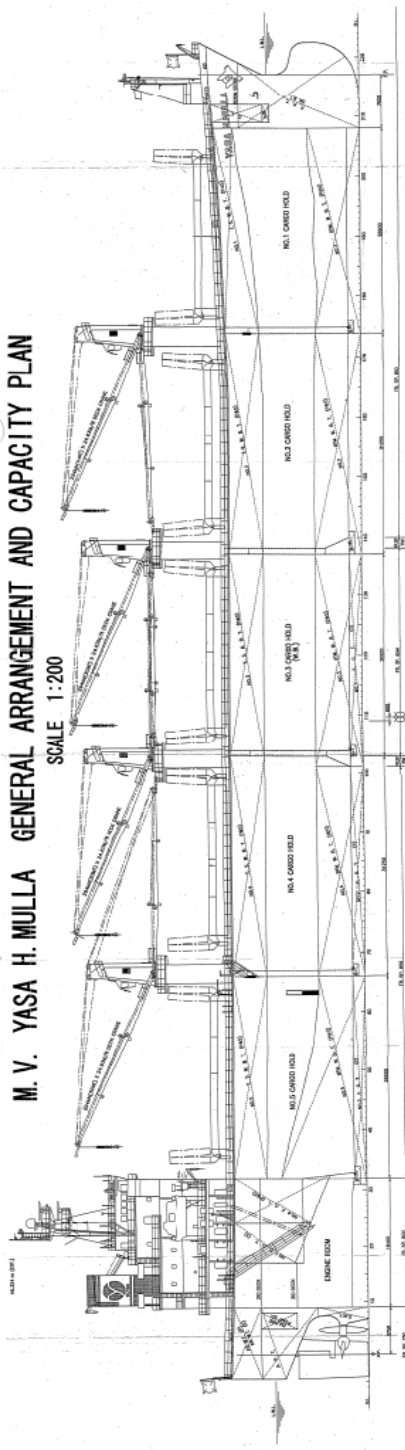
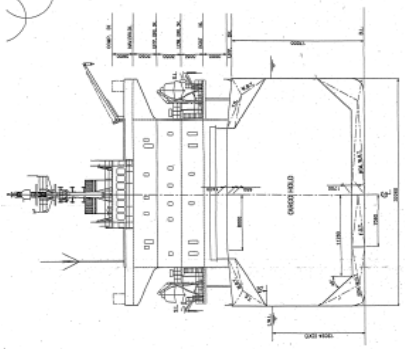
Capacities :-

Compartment:	Grain (M ³)			Bale (M ³)		
	Hold	Hatch	Total	Hold	Hatch	Total
No 1	11,986.5	677.3	12,663.8	11,741.3	677.3	12,418.6
No 2	14,029.2	606.6	14,635.8	13,598.2	606.6	14,204.8
No 3	12,921.8	549.3	13,471.1	12,494.6	549.3	13,043.9
No 4	13,982.8	549.3	14,532.1	13,391.2	549.3	13,940.5
No 5	11,904.2	549.3	12,453.5	11,443.4	549.3	11,992.7
Total	64,824.5	2,931.8	67,756.3	62,668.7	2,931.8	65,600.5

* The details in this brochure are for guidance only and no warranty or representation is given nor liability accepted, by owners as to the accuracy of such details. *

M. V. YASA H. MULLA GENERAL ARRANGEMENT AND CAPACITY PLAN

SCALE 1:200



PRINCIPAL PARTICULARS	
1. NAME OF VESSEL	M. V. YASA H. MULLA
2. TYPE OF VESSEL	GENERAL CARGO SHIP
3. GROSS TONNAGE	1000
4. NET TONNAGE	700
5. REGISTERED TONNAGE	700
6. DEADWEIGHT TONNAGE	1500
7. CARGO CAPACITY	1500
8. SPEED	12 KNOTS
9. RANGE	10000
10. RANGE OF SERVICE	INDIAN OCEAN
11. RANGE OF SERVICE	INDIAN OCEAN
12. RANGE OF SERVICE	INDIAN OCEAN
13. RANGE OF SERVICE	INDIAN OCEAN
14. RANGE OF SERVICE	INDIAN OCEAN
15. RANGE OF SERVICE	INDIAN OCEAN
16. RANGE OF SERVICE	INDIAN OCEAN
17. RANGE OF SERVICE	INDIAN OCEAN
18. RANGE OF SERVICE	INDIAN OCEAN
19. RANGE OF SERVICE	INDIAN OCEAN
20. RANGE OF SERVICE	INDIAN OCEAN