

M.V. "THOR NITNIRUND"



Owner:
Thoresen Shipping Singapore Pte. Ltd.

Manager:
Thoresen & Co.,(Bangkok) Ltd.

Built : Nantong Cosco KHI Ship Engineering Co.Ltd., China (Jul 01, 2016)

Classification : NK

Vessel's Type : Bulk Carrier,

Flag: Singapore

Call Sign: 9V7005

Inmarsat C: 463720370

Inmarsat Phone: + 6628449598

E-mail: THOR.NITNIRUND@THORESEN-SHIPPING.COM

Dimensions: LOA **199.9** m.
LBP **197.0** m.
BREADTH **32.24** m.
DEPTH **18.60** m.

Tonnage: GRT **34,584** MT
NRT **20,174** MT

WDWT: 59,507 / Draft 12.755m / TPC 60.4
SDWT: 61,190 / Draft 13.026m / TPC 60.4
TDWT: 62,782 / Draft 13.596m / TPC 60.4
Suez Grt/Nrt : 36,058.57 Grt / 33,067.10 Nrt

Hatch Dimensions: 5 Holds / 5 Hatches

H1 : 18.69 x 18.60 m.
H2 : 21.36 x 18.60 m.
H3 : 21.36 x 18.60 m.
H4 : 21.36 x 18.60 m.
H5 : 21.36 x 18.60 m.

Tank top strength:
#1: 23 T/M² #2,4: 16.5 T/M² #3: 24.5 T/M²
#5: 23.0 T/M²
Hatch cover 2.20 T/M² Deck 5.30 T/M²

Ventilation: Natural

CO2: No

Cargo Gears : 4 DECK CRANES
SWL 30.5 MT / 24.0 MT with grab

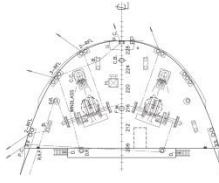
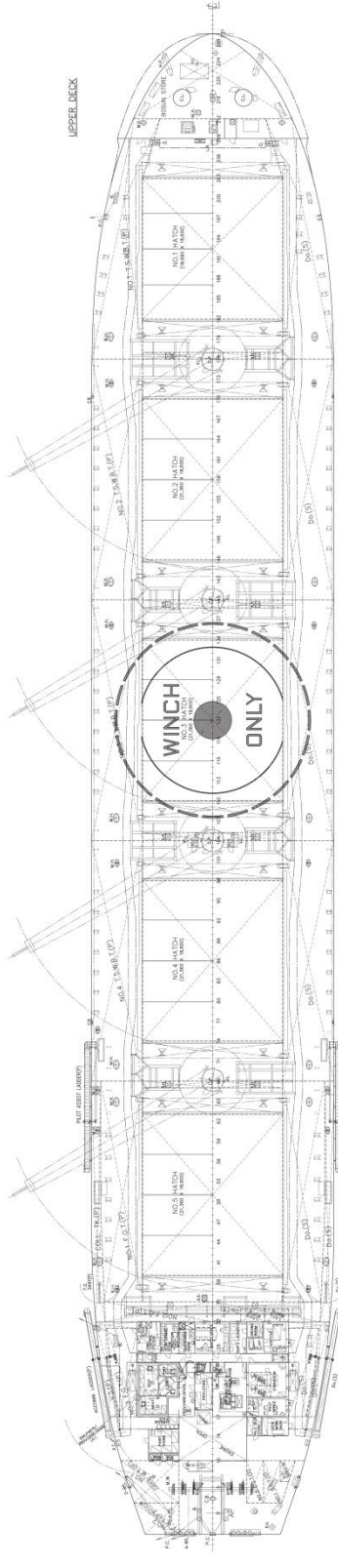
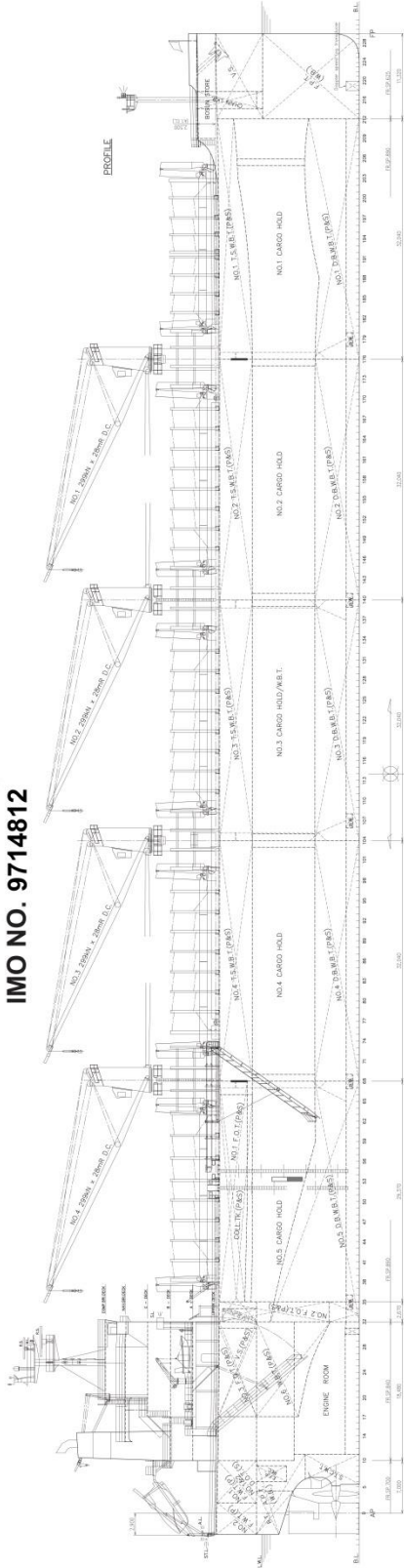
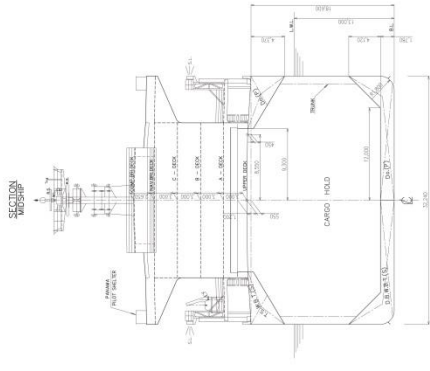
Machinery :
Main Engine: MITSUI MAN B&W
MODEL 6S 50ME-B9.3 -TII
Auxiliary Engine: Yanmar Co., Ltd
– 6EY1812W / 3 NOS

Capacities :-

| Compartment: | Grain (M ³) Hold | Bale (M ³) Hold |
|--------------|------------------------------|-----------------------------|
| No 1 | 14,270.30 | 13,578.30 |
| No 2 | 16,805.60 | 16,087.30 |
| No 3 | 15,631.30 | 14,813.10 |
| No 4 | 16,805.60 | 16,087.10 |
| No 5 | 14,033.40 | 13,576.00 |
| Total | 77,546.20 | 74,141.80 |

* The details in this brochure are for guidance only and no warranty or representation is given nor liability accepted, by owners as to the accuracy of such details. *

GENERAL ARRANGEMENT M.V. THOR NITNIRUND IMO NO. 9714812



PRINCIPAL DIMENSIONS

L.O.A. 44.580m
 L.P.P. 32.10m
 D.W.D. 16.50m
 S.M.D. (DRAFT) 13.30m

CLASSIFICATION

ACC. TO SOLAS (CHARTERED), IACS (CLASS), ICGT (CLASS), ICGT (CLASS), ICGT (CLASS), ICGT (CLASS), ICGT (CLASS)
 IACS UH 100, UH 100, UH 100, UH 100, UH 100, UH 100
 ICGT UH 100, UH 100, UH 100, UH 100, UH 100, UH 100

MAIN ENGINE

MAN B & W 12V140L-D2 (12 CYL., 1400 RPM)
 MAN B & W 12V140L-D2 (12 CYL., 1400 RPM)
 MAN B & W 12V140L-D2 (12 CYL., 1400 RPM)

COMPLEMENT

CREW 14 (13 Males, 1 Female)
 PASSENGERS 10 (10 Males, 0 Female)

| DEPARTMENT | OFFICER | CHIEF | NUMBER | TOTAL |
|------------|-----------|-----------|--------|-------|
| CREW | ENGINEER | ENGINEER | 1 | 13 |
| | ENGINEER | ENGINEER | 1 | |
| | ENGINEER | ENGINEER | 1 | |
| | ENGINEER | ENGINEER | 1 | |
| PASSENGERS | PASSENGER | PASSENGER | 1 | 10 |
| | PASSENGER | PASSENGER | 1 | |
| | PASSENGER | PASSENGER | 1 | |
| | PASSENGER | PASSENGER | 1 | |
| TOTAL | | | 14 | 23 |
| | | | 13 | |
| | | | 1 | |
| | | | 1 | |

SCALE: 1/200 (1900x841)